

# ICEBOX® iSQ4R

## Compact iSCSI RAID solution

### Cost-effective and powerful IP SAN device

The smallest member of the N-TEC ICEBOX family is the ICEBOX® iSQ4. It offers almost the same features and performance values as its larger siblings.

The ICEBOX® iSQ4 is applied in areas requiring rapid access in blocks but which do not place high requirements towards the total capacity.

Despite its minimal space requirements, the ICEBOX iSQ4 has a maximum possible gross total capacity of 8.0 TB or more, depending on the availability of larger hard disks. Only the reasonably priced SATA2 HDD is used in the ICEBOX® iSQ4.



Front with drive bays

Because of its excellent performance values, the ICEBOX® iSQ4 is also excellently suited for all applications requiring consistent high speed, such as when streaming video and audio data. With two 1 Gb/s iSCSI host ports, the ICEBOX iSQ4 is also suited for use as data storage in multi host and virtualized environments that require rapid and higher data availability.

#### Greatest reliability:

The S.M.A.R.T. Correction technology includes Disk Self Test, Disk Scrubbing (integrity test of data with detection of faulty sectors and correction of parity faults) and Disk Cloning (periodic check of hard disks, data are swapped to hot spare drives in case of faults).



Rear side with display and connectors

#### Special features of the ICEBOX® iSQ4

- up to 8 TB in only 1 HE
- redundant power units
- 1 GB ECC cache
- extremely reliable fans (radial)
- The use of plastic parts has been omitted to a great extent
- Development and production in Germany in accordance with a certified quality and environment management (DIN EN ISO 9001:2008 and DIN EN ISO 14001:2005)

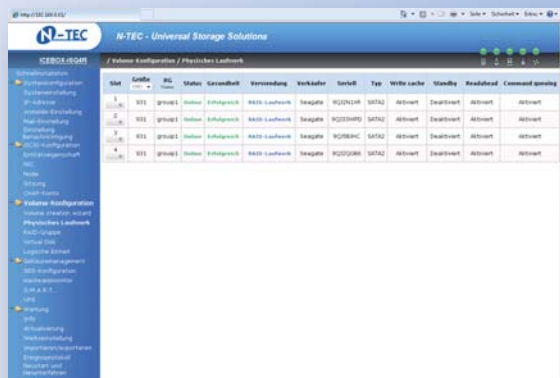


**N-TEC GmbH**  
Oskar-Messter-Str. 14  
D-85737 Ismaning  
www.ntecgmbh.de  
Phone +49 (0)89.958407.0  
Fax +49 (0)89.958407.11

# ICEBOX® iSQ4R

## Technical data

	ICEBOX-iSQ4R
Operating system	OS independent and host transparent
CPU	Intel XScale IOP331 64Bit RISC
Host interface	2x GbE iSCSI (1000BaseTX)
Disk interface	SATA2
Disk channels	4
Cache	1024 MB
RAID level	0, 1, 0+1, 3, 5, 6 und JBOD
Hot spare	Global and dedicated
Hot swap	disk drives, power unit
Online expansion	yes
RAID migration	yes
Stripe size	variable 4k, 8k, 16k, 32k, 64k
Write option	write through, write back
Remote management	Web Browser, SSH, RS232 serial
Remote alarm	SNMP, SMTP, Win Popup (netsend)
Access control	Password
Fans	3x 80 mm radial
Power unit	2x 250 W
Voltage input	Voltage: 90 ~ 264 VAC full range, frequency: 47 ~ 63 Hz, PFC: up to the target of 95% @ 110V, full load
Max. power consumption	150 W
Environment	Temperature 0° C ~ 40° C, humidity 20% ~ 75% non condensing
MTBF	ca. 100.000h
Dimensions in mm	W 444,5 x H 43,2 (1U) x D 673
Weight without disks	18 kg



Configuration browser



**N-TEC GmbH**  
 Oskar-Messter-Str. 14  
 D-85737 Ismaning  
 www.ntecgmbh.de  
 Phone +49 (0)89.958407.0  
 Fax +49 (0)89.958407.11